

Longtom-4 H LWD RM 500MD

FIELD PRINT

Format: EcoScope RM Log

Vertical Scale: 1:500

Graphics File Created: 06-Aug-2008 16:58

PIP SUMMARY

Density Samples ┃

Neutron Samples ┃

┃ Gamma Ray Samples

┃ Resistivity Samples

Rate of Penetration, Averaged over Last
5ft (ROP5_RM)
200 (M/HR) 0

Ultrasonic Caliper, Vertical Diameter
(UCVE)
6 (IN) 16

Ultrasonic Caliper, Horizontal Diameter
(UCHO)
6 (IN) 16

Time after BIT (between drilling and
measurement) (TAB_DEN)
0 (HR) 10

Gamma Ray, Average (GRMA)
0 (GAPI) 200

Collar
Rotational
Speed
(CRPM)
(RPM)
0 200

ARC Phase Shift Resistivity 40 inch at 2
MHz (P40H)
0.2 (OHMM) 2000

ARC Phase Shift Resistivity 34 inch at 2
MHz (P34H)
0.2 (OHMM) 2000

ARC Phase Shift Resistivity 28 inch at 2
MHz (P28H)
0.2 (OHMM) 2000

ARC Phase Shift Resistivity 22 inch at 2
MHz (P22H)
0.2 (OHMM) 2000

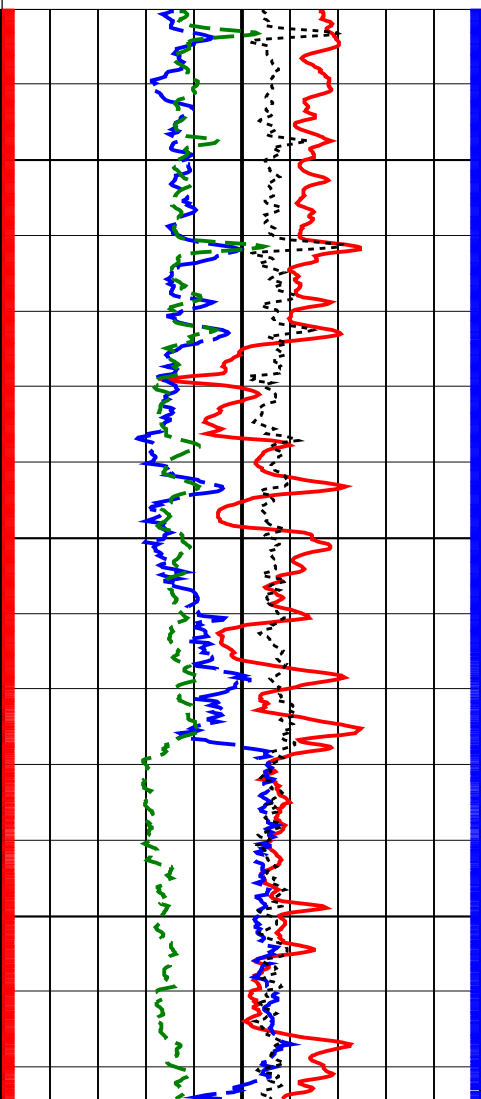
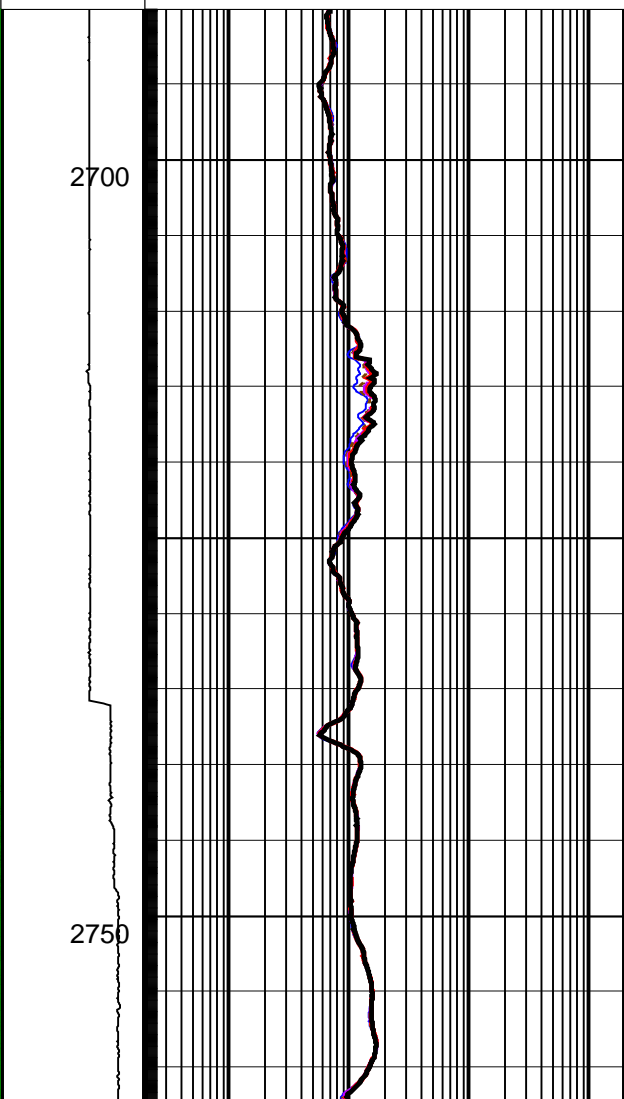
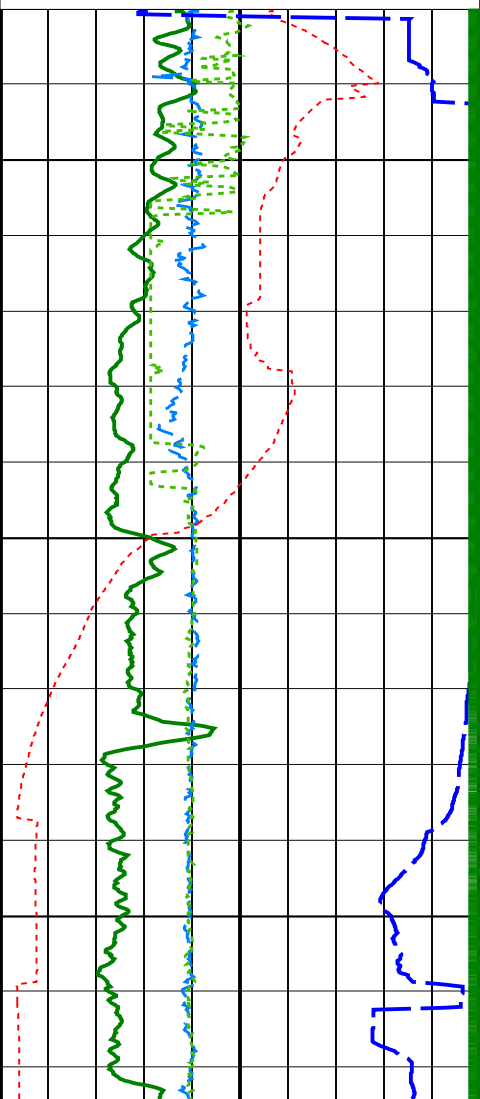
ARC Phase Shift Resistivity 16 inch at 2
MHz (P16H)
0.2 (OHMM) 2000

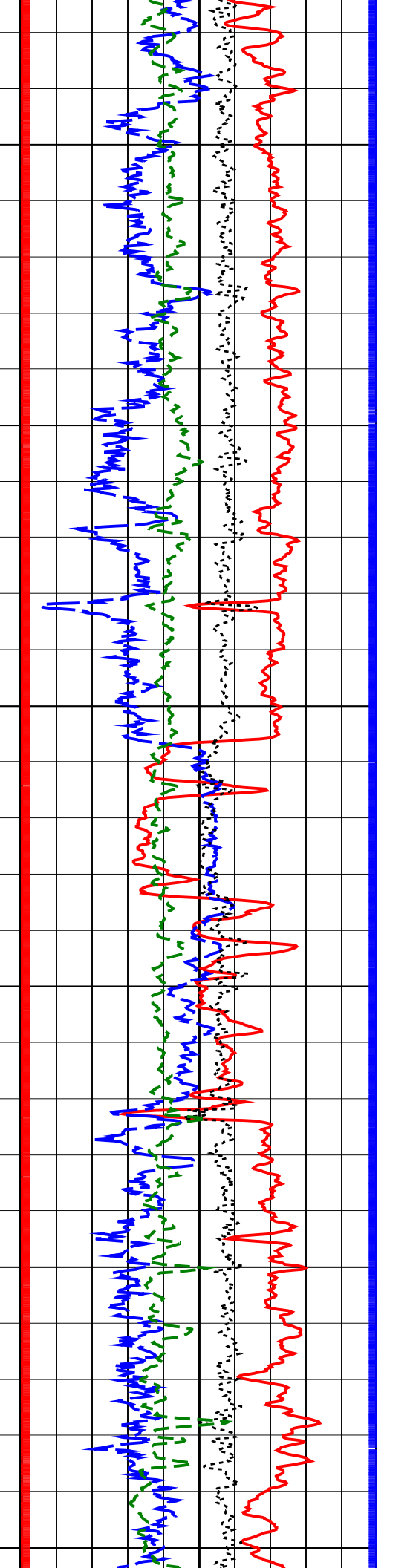
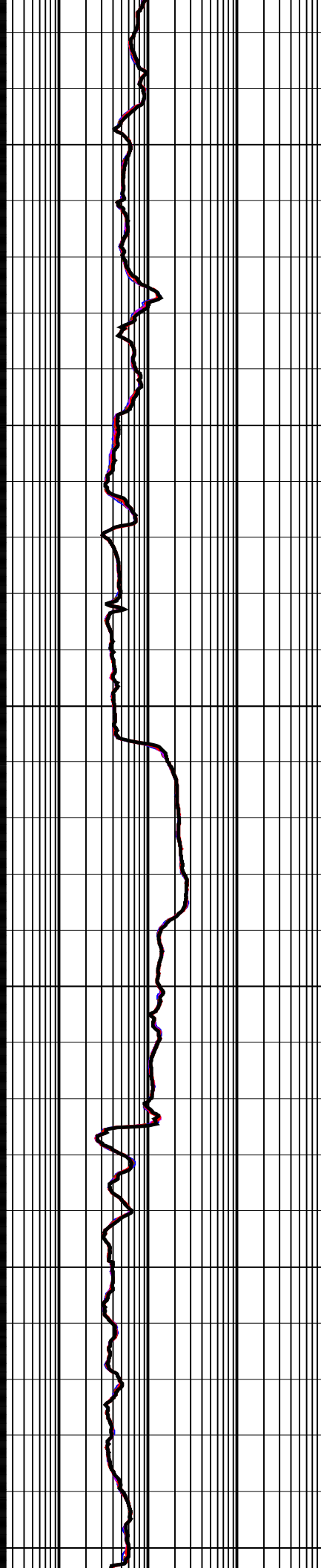
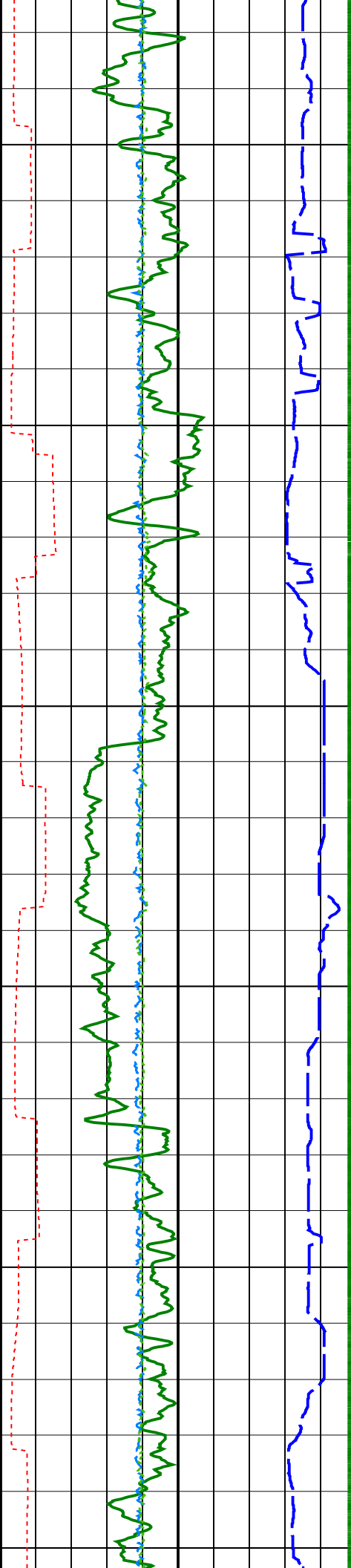
Photoelectric Factor, Bottom (PEB)
0 (-----) 10

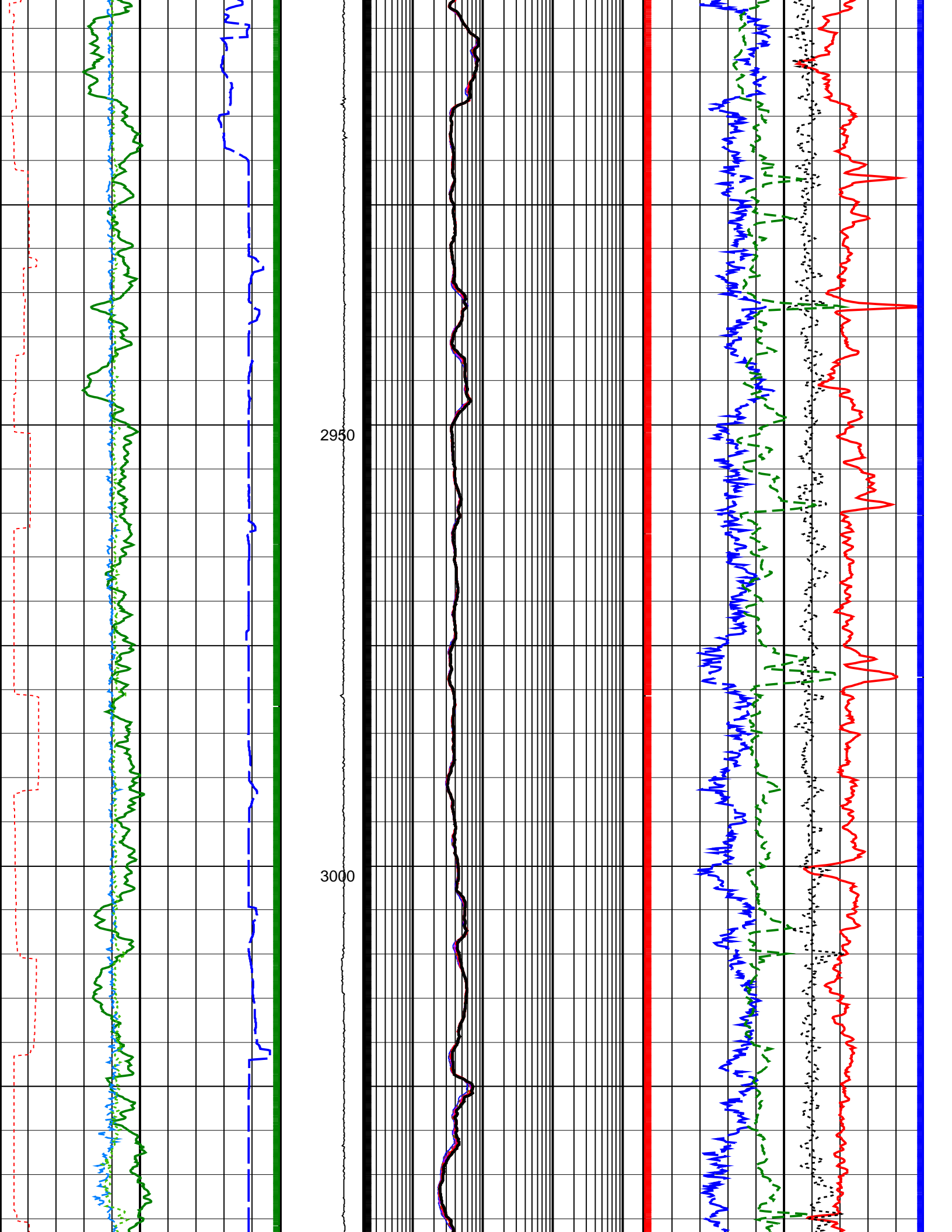
Bulk Density Correction, Bottom
(DRHB)
-0.25 (G/C3) 0.25

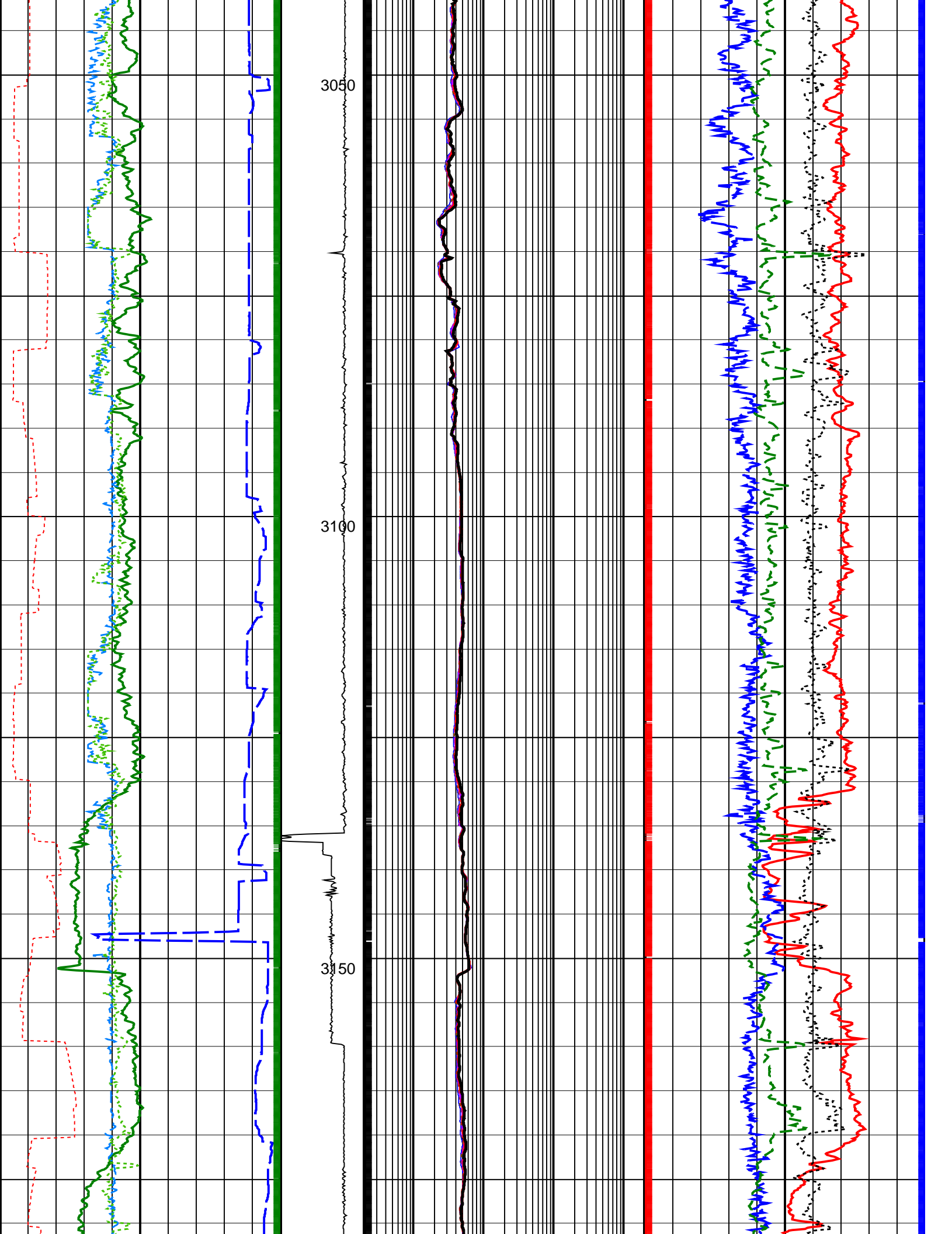
Thermal Neutron Porosity (Ratio
Method) in Selected Lithology (TNPH)
45 (PU) -15

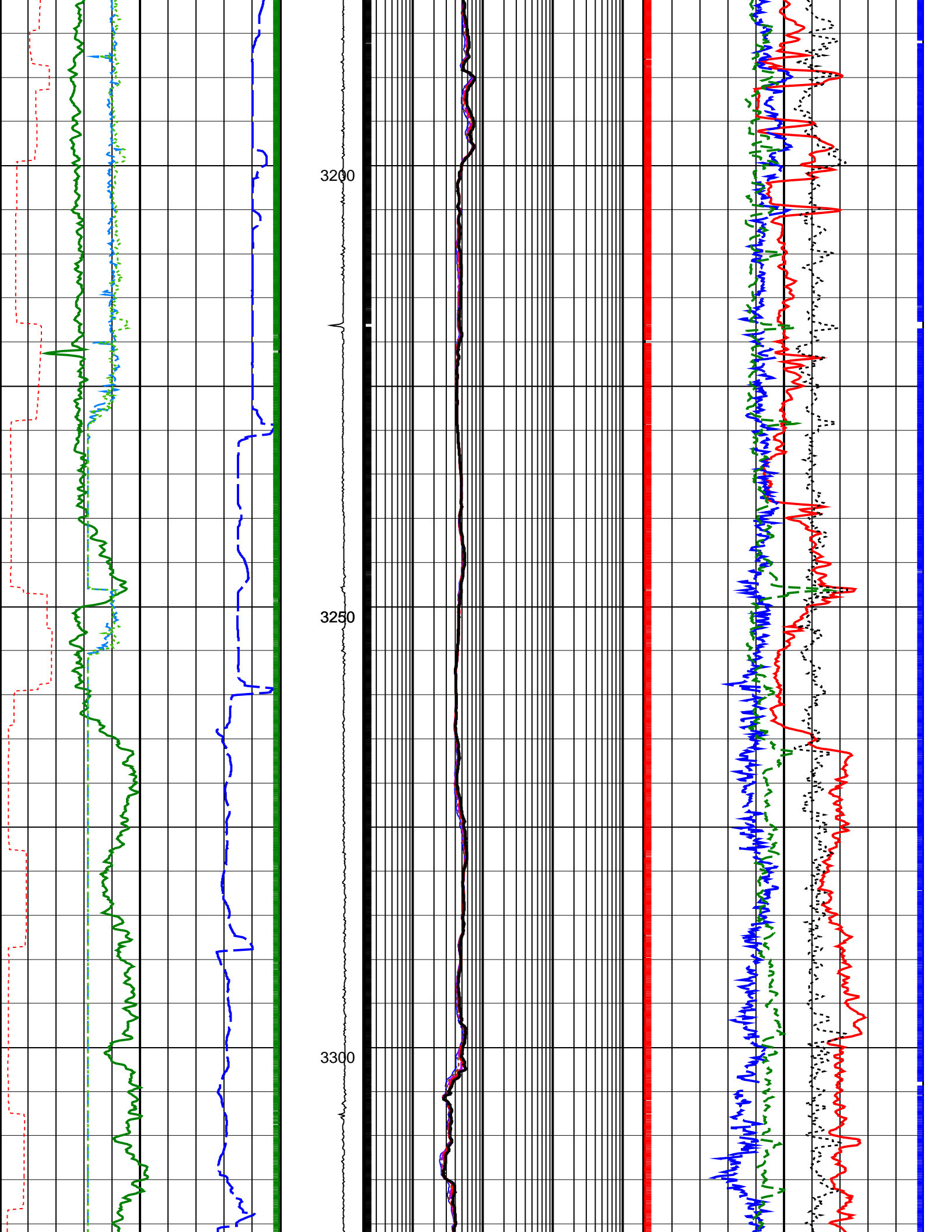
Bulk Density, Bottom (ROBB)
1.85 (G/C3) 2.85

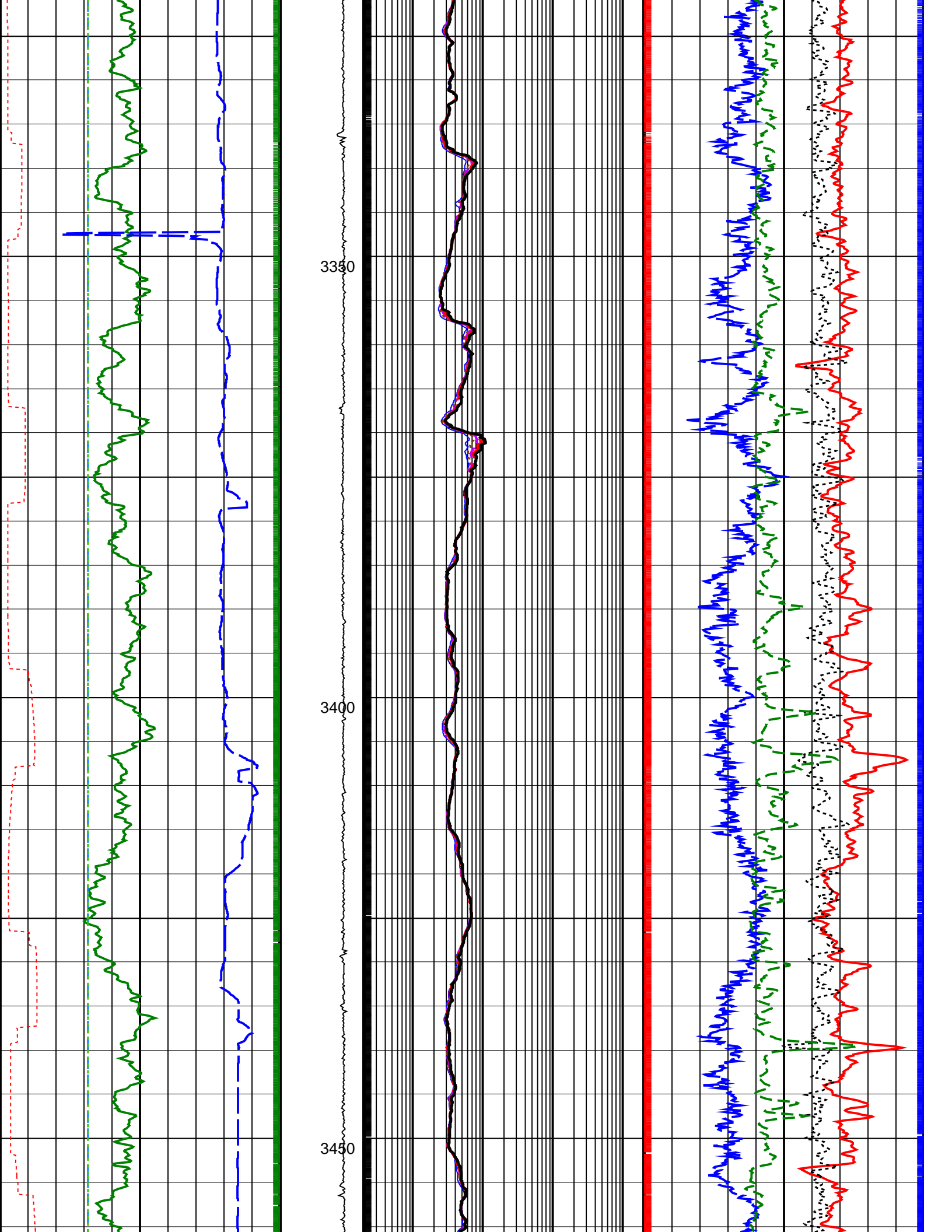


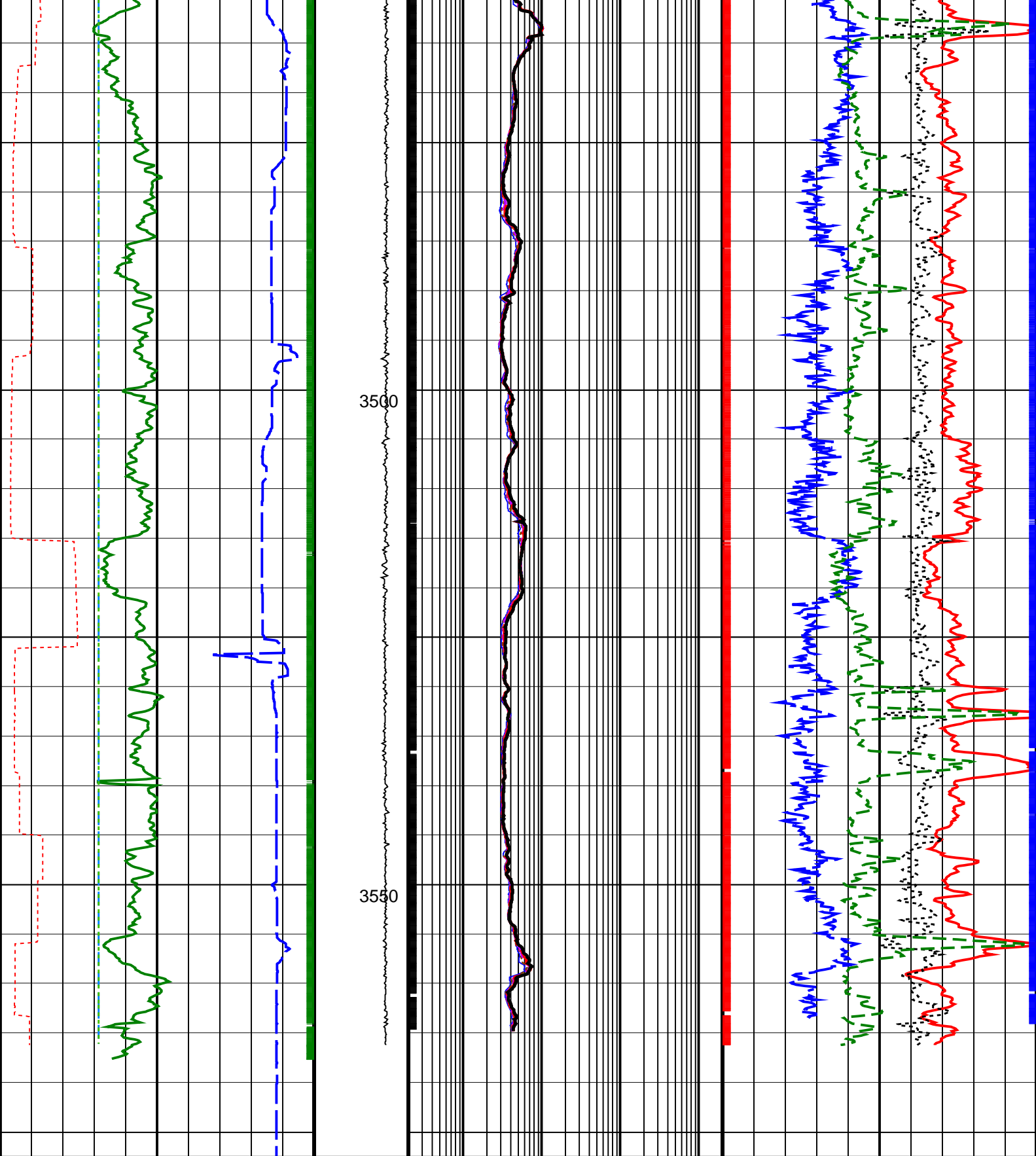












Gamma Ray, Average (GRMA)		Collar Rotational Speed (CRPM) (RPM)	ARC Phase Shift Resistivity 16 inch at 2		Bulk Density, Bottom (ROBB)	
0	(GAPI)		200	MHz (P16H)	1.85	(G/C3)
			0	200	0.2	2000
Time after BIT (between drilling and measurement) (TAB_DEN)			ARC Phase Shift Resistivity 22 inch at 2		Thermal Neutron Porosity (Ratio	
0	(HR)		10	MHz (P22H)	Method) in Selected Lithology (TNPH)	
			0	200	0.2	2000
Ultrasonic Caliper, Horizontal Diameter			ARC Phase Shift Resistivity 28 inch at 2		Bulk Density Correction, Bottom	

<div><div><div>6</div><div>(UCHO)</div><div>(IN)</div><div>16</div></div><div>Ultrasonic Caliper, Vertical Diameter (UCVE)</div><div><div>6</div><div>(IN)</div><div>16</div></div><div>Rate of Penetration, Averaged over Last 5ft (ROP5_RM)</div><div><div>200</div><div>(M/HR)</div><div>0</div></div></div>		<div><div><div>0.2</div><div>MHz (P28H)</div><div>(OHMM)</div><div>2000</div></div></div>	<div><div><div>-0.25</div><div>(DRHB)</div><div>(G/C3)</div><div>0.25</div></div></div>
		<div><div><div>ARC Phase Shift Resistivity 34 inch at 2 MHz (P34H)</div><div>0.2</div><div>(OHMM)</div><div>2000</div></div></div>	<div><div><div>Photoelectric Factor, Bottom (PEB)</div><div>0</div><div>(----</div><div>10</div></div></div>
		<div><div><div>ARC Phase Shift Resistivity 40 inch at 2 MHz (P40H)</div><div>0.2</div><div>(OHMM)</div><div>2000</div></div></div>	
<div>PIP SUMMARY</div> <div><div>Density Samples</div><div>+</div><div>Gamma Ray Samples</div><div>+</div><div>Resistivity Samples</div><div>+</div><div>Neutron Samples</div><div>+</div></div>			
<div>IDEAL Version: ID13_0C_08</div> <div>IDF</div>			